

## Rhino Rescue

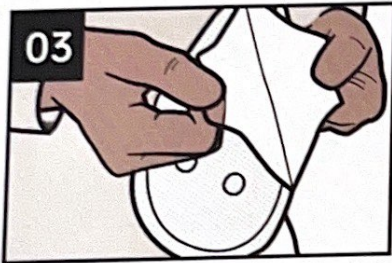
# CHEST SEAL VENTED



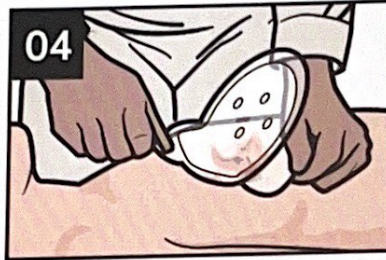
**01**  
EXPOSE and uncover any chest wounds.



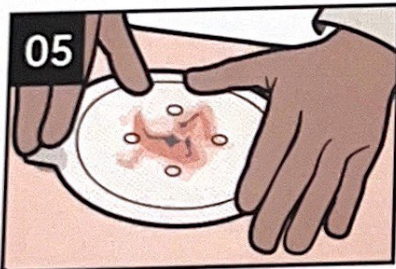
**02**  
OPEN the outer wrapper of the chest seal vented.



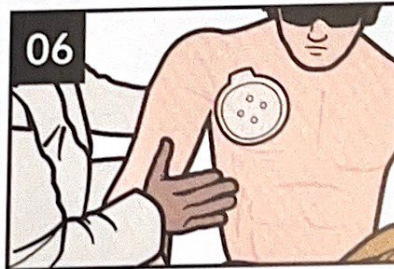
**03**  
PEEL OFF the protective liner, exposing the adhesive portion of the seal.



**04**  
PLACE pressing on patient's wound, adhesive side down.



**05**  
Press dressing firmly to skin to assure an occlusive seal.



**06**  
PLACE conscious casualty into a sitting position or an unconscious casualty in the recovery position (with their injured side down).